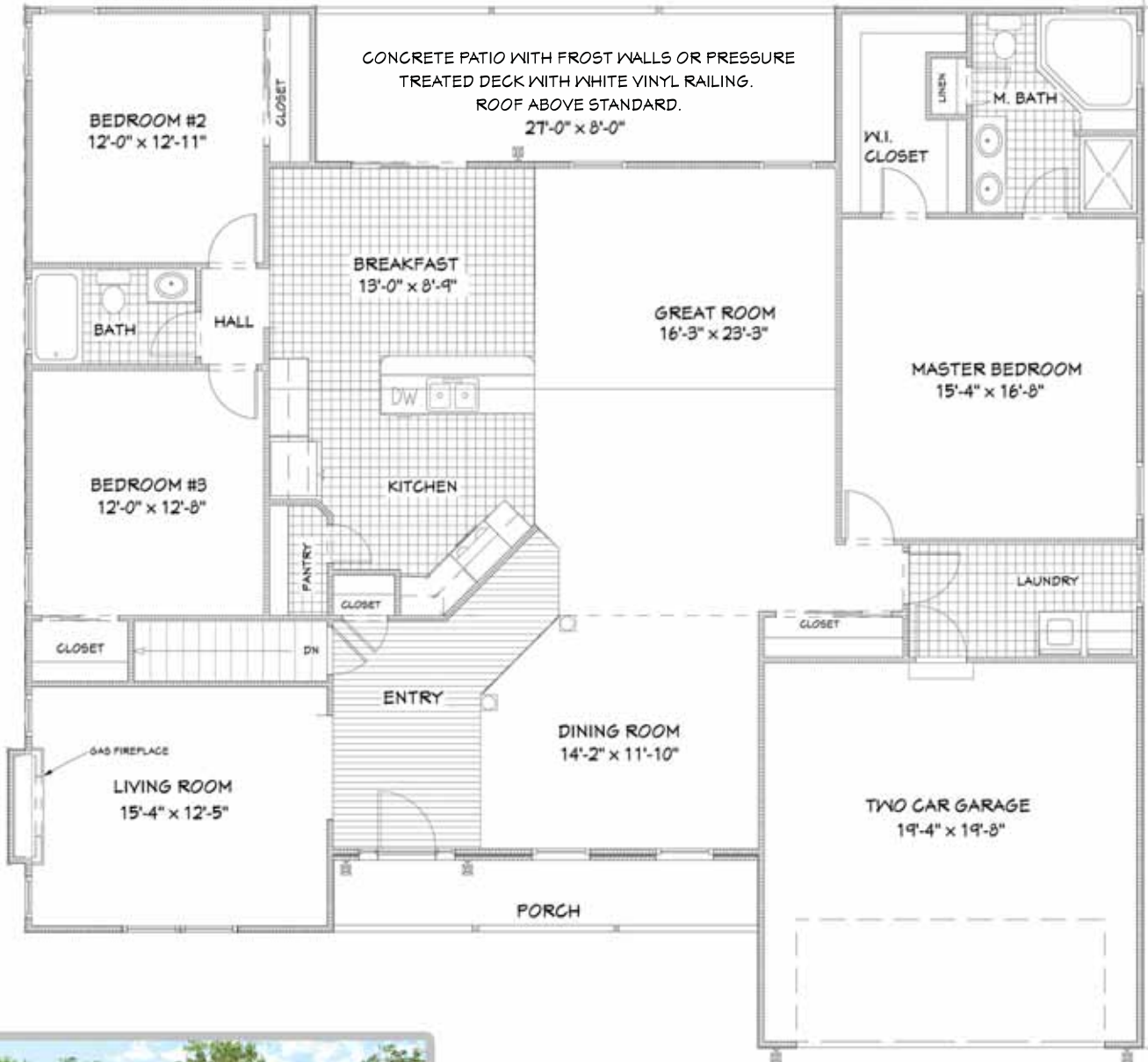


# THE CAMBRIDGE II



**FIRST FLOOR**  
(2,200 SQ.FT.)

9' FIRST FLOOR CEILING PACKAGE



TOTAL LIVING AREA 2,200 SQ.FT.

- NUMBER OF FLOORS: 1
- GARAGE: 2
- BEDROOMS: 3
- BATHROOMS: 2

DATE: JANUARY 14, 2014

**Greth** CRAFTED WITH CARE  
**Homes** <sup>SM</sup>  
SINCE 1973

[WWW.GRETHHOMES.COM](http://WWW.GRETHHOMES.COM)